

QUICK-CONNECT-SS™ FITTING

DWG # 125-QCSS ISO REV 1
DATE 11/07

ITEM: QUICK-CONNECT-SS™ FITTING

MATERIAL: STAINLESS STEEL BODY AND INTERNAL JAWS

FITTING TYPE: SEMI-ADJUSTABLE, SELF-LOCKING CABLE END FITTING

SWAGE TYPE: SELF-LOCKING JAWS (NO SWAGING)

POST TYPE: METAL OR WOOD (POSTS NOT INCLUDED).

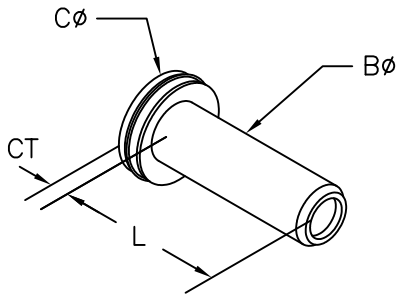
FASTENING TO POST: PASS CABLE THROUGH HOLE IN END/TERMINATION POST, SLIDE FITTING ONTO CABLE AND PULL TIGHT. FITTING AUTOMATICALLY GRABS AND LOCKS.

FASTENING AT ANGLES: DRILL HOLES AT ANGLE AND USE BEVELED WASHERS.

CABLE TENSIONING: ADJUSTABLE BY PULLING CABLE THROUGH FITTING. (NOT DESIGNED AS FINAL TENSIONING FITTING)

HARDWARE PAIRINGS: USUALLY PAIRED WITH A THREADED TERMINAL FITTING. MUST BE USED WITH A TENSION ADJUSTMENT FITTING; DO NOT USE WITH FIXED END OR ANOTHER QUICK-CONNECT-SS™ FITTING.

SUPPLIER: FEENEY ARCHITECTURAL PRODUCTS



QUICK-CONNECT-SS™ STAINLESS STEEL

| PART# | SWAGE TYPE | CABLE SIZE | BODY DIA (Bø) | END DIA (Cø) | END THICK (CT) | LENGTH (L) | ATTACHMENT POST DRILL HOLE ø |
|-------|--------------|------------|---------------|--------------|----------------|------------|------------------------------|
| 3146 | SELF-LOCKING | 1/8" | 3/8" | 5/8" | 1/8" | 1-1/8" | 3/8" |
| 3147 | SELF-LOCKING | 3/16" | 17/32" | 3/4" | 1/4" | 1-5/8" | 9/16" |
| 3148 | SELF-LOCKING | 1/4" | 17/32" | 3/4" | 1/4" | 1-5/8" | 9/16" |

feeneyarchitectural
PRODUCTS

CableRail™-Custom Assemblies
2603 Union Street
Oakland, CA 94607-2423
Ph: 800-888-2418 or 510-893-9473
Fx: 510-893-9484, www.cablerail.com