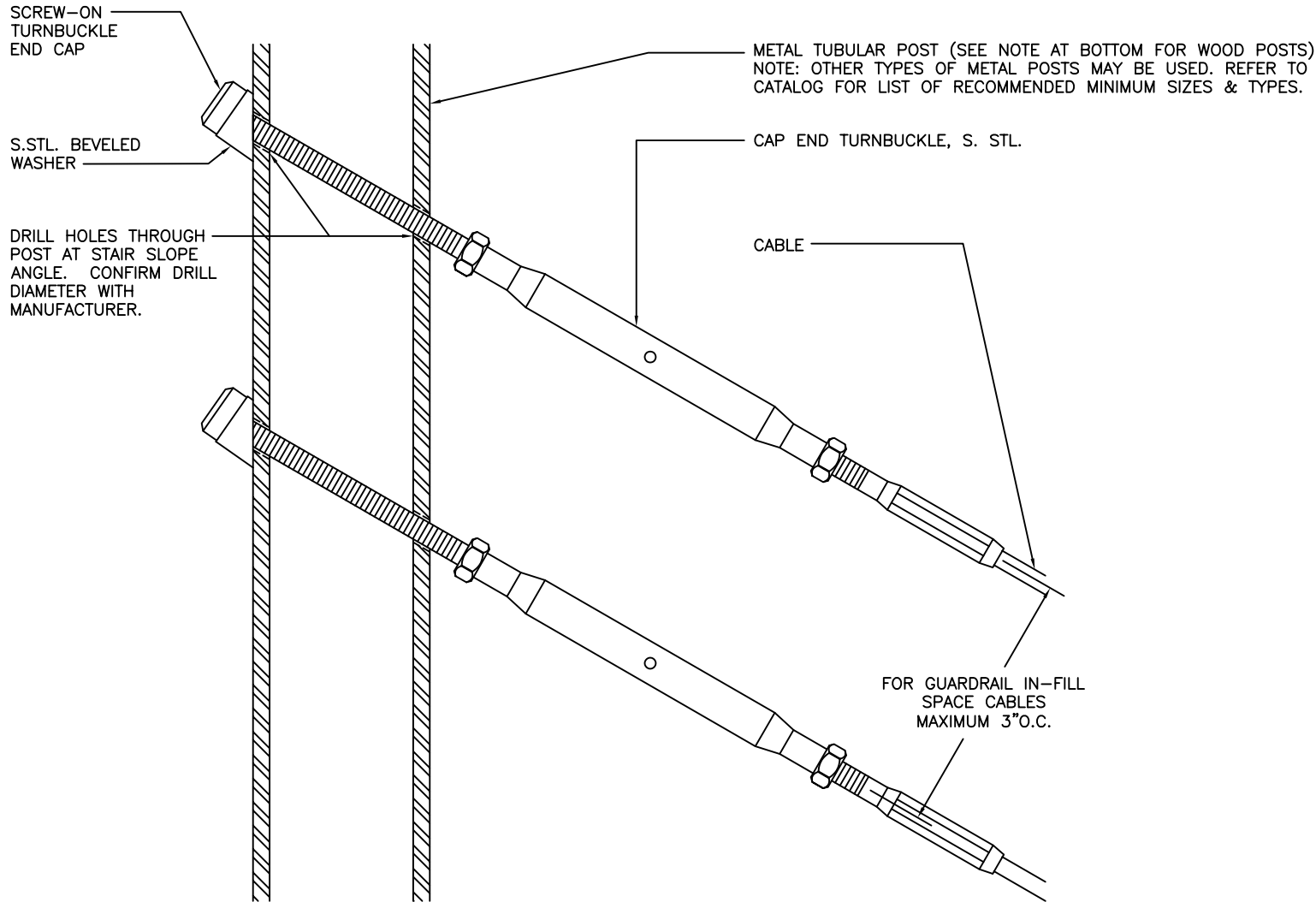


CAP END TURNBUCKLE – ANGLED TERMINATION ON METAL POST  
(DETAILS TYPICAL FOR 1/8", 3/16" & 1/4" CABLE)

DWG # 187-CETB MTL ANGLE REV 2  
DATE 11/07



NOTE: TERMINATION DETAIL SIMILAR FOR WOOD POSTS BUT WOULD REQUIRE A 1" O.D. FLAT WASHER UNDER THE BEVELED WASHER OR REMOVE THE BEVELED WASHER ALTOGETHER AND COUNTERSINK THE CAP END & FLAT WASHER INTO THE WOOD. A SPECIAL EXTRA LONG ALL-THREAD ROD WILL ALSO BE NEEDED TO PENETRATE THE THICKNESS OF THE WOOD POST.

**feeneyarchitectural**  
PRODUCTS

CableRail™—Custom Assemblies  
2603 Union Street  
Oakland, CA 94607-2423  
Ph: 800-888-2418 or 510-893-9473  
Fx: 510-893-9484, [www.cablerail.com](http://www.cablerail.com)