

ITEM: FIXED BALL END

MATERIAL: TYPE 316 STAINLESS STEEL.

FITTING TYPE: NON-ADJUSTABLE CABLE END FITTING

SWAGE TYPE: MACHINE HEX SWAGE AT FACTORY (1/8" & 3/16" SIZES ALSO AVAILABLE IN CABLECRIMP HAND SWAGE STYLE FOR ATTACHING IN THE FIELD).

POST TYPE: METAL. WOOD POSSIBLE BUT NOT RECOMMENDED. (POSTS NOT INCLUDED).

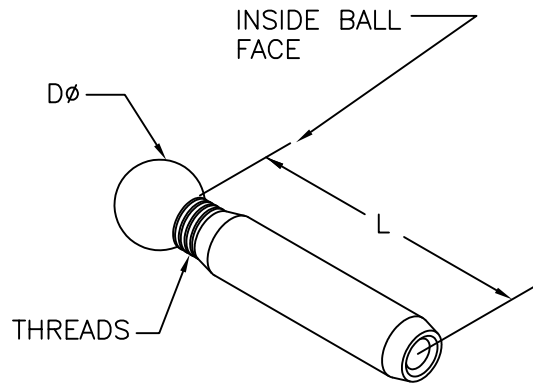
FASTENING TO POST: ATTACH THROUGH END/TERMINATION POST HOLES USING A SCREW-ON BALL END.

FASTENING AT ANGLES: DRILL SLOTS OR ANGLED POST HOLES AND FITTING WILL PIVOT ON BALL END.

CABLE TENSIONING: NON-ADJUSTABLE FIXED END.

HARDWARE PAIRINGS: USUALLY PAIRED WITH A BALL END TURNBUCKLE. MUST BE PAIRED WITH A TENSION ADJUSTMENT FITTING, NOT ANOTHER FIXED END.

SUPPLIER: FEENEY ARCHITECTURAL PRODUCTS



FIXED BALL END, STAINLESS STEEL

PART#	SWAGE TYPE	CABLE SIZE	THREAD SIZE	BALL END DIA (Dø)	LENGTH (L)	*ATTACHMENT POST DRILL HOLE ø
3352	MACHINE	1/8"	1/4-28RH	5/8"	1-1/4"	5/16"
3353	MACHINE	3/16"	1/4-28RH	5/8"	1-3/4"	3/8"
3354	MACHINE	1/4"	5/16-24RH	5/8"	2"	7/16"
3355	CABLECRIMP	1/8"	1/4-28RH	5/8"	1-7/8"	5/16"
3356	CABLECRIMP	3/16"	1/4-28RH	5/8"	2-1/4"	3/8"

* IF DESIRED THE BALL END CAN BE SLIGHTLY RECESSED INTO THE POST BY COUNTERBORING WITH A 9/16" DRILL

feeneyarchitectural
PRODUCTS

CableRail™-Custom Assemblies
2603 Union Street
Oakland, CA 94607-2423
Ph: 800-888-2418 or 510-893-9473
Fx: 510-893-9484, www.cablerail.com