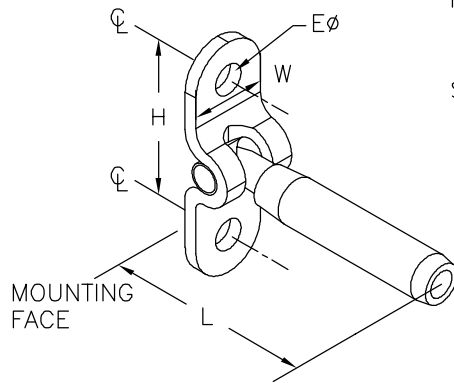


ITEM: FIXED SURFACE MOUNT
 MATERIAL: TYPE 316 STAINLESS STEEL.
 FITTING TYPE: NON-ADJUSTABLE CABLE END FITTING
 SWAGE TYPE: MACHINE HEX SWAGE AT FACTORY (1/8" & 3/16" SIZES ALSO AVAILABLE IN CABLECRIMP HAND SWAGE STYLE FOR FIELD FABRICATION)
 POST TYPE: WOOD. METAL POSSIBLE BUT NOT RECOMMENDED. (POSTS NOT INCLUDED).
 FASTENING TO POST: ATTACH TO FACE OF END/TERMINATION POST OR WALL USING TWO SCREWS OR BOLTS.
 FASTENING AT ANGLES: MOUNTING FLANGE PIVOTS UP TO 130 DEGREES.
 CABLE TENSIONING: NON-ADJUSTABLE FIXED END.
 HARDWARE PAIRINGS: USUALLY PAIRED WITH SURFACE MOUNT TURNBUCKLE. MUST ONLY BE PAIRED WITH A TENSION ADJUSTMENT FITTING (NOT ANOTHER FIXED END).

SUPPLIER: FEENEY WIRE ROPE & RIGGING
 2603 UNION STREET, OAKLAND, CA 94607
 PH: 1-800/888-2418
 FAX: 1-510/893-9484
 E-MAIL: sales@feeneywire.com
 WEB: www.cablerail.com



FIXED SURFACE MOUNT, STAINLESS STEEL

PART#	MODEL#	SWAGE TYPE	CABLE SIZE	HOLE DIA. (Eφ)	HOLE SPAN (H)†	FLANGE WIDTH (W)	LENGTH (L)	ATTACHMENT POST DRILL HOLE φ
3281	125-FSM-T	MACHINE	1/8"	1/4"	1-3/8"	5/8"	2-1/8"	LAG OR TAP
3284	187-FSM-T	MACHINE	3/16"	1/4"	1-3/8"	5/8"	2-1/4"	LAG OR TAP
3337	250-FSM-T	MACHINE	1/4"	5/16"	1-1/2"	3/4"	3-1/4"	LAG OR TAP
*3333	CC125-FSM-T	CABLECRIMP	1/8"	1/4"	1-3/8"	5/8"	3"	LAG OR TAP
3334	CC187-FSM-T	CABLECRIMP	3/16"	1/4"	1-3/8"	5/8"	3"	LAG OR TAP

* 3333 IS SAME AS A #3334 BUT INCLUDES A CONVERSION INSERT SLEEVE FOR CRIMPING ONTO 1/8" CABLE
 † SINCE FLANGES ARE FORMED PIECES, ALLOW A TOLERANCE OF ±1/16" ON FLANGE HOLE SPAN DIMENSION (H).