

SLEEKLINE BALL END TURNBUCKLE

DWG # 187-SBETB ISO REV 2  
DATE 11/07

ITEM: SLEEKLINE BALL END TURNBUCKLE

MATERIAL: TYPE 316 STAINLESS STEEL.

FITTING TYPE: ADJUSTABLE CABLE END TURNBUCKLE FOR ATTACHING & TENSIONING LINES. SMOOTH, ATTRACTIVE APPEARANCE WITHOUT ANY EXPOSED THREADS OR SWAGE ENDS.

SWAGE TYPE: CAN BE MACHINE SWAGED IN FACTORY BUT BEST SUITED FOR FIELD ATTACHMENT USING CABLECRIMP HAND SWAGE STYLE.

POST TYPE: METAL. WOOD POSSIBLE BUT NOT RECOMMENDED. (POSTS NOT INCLUDED).

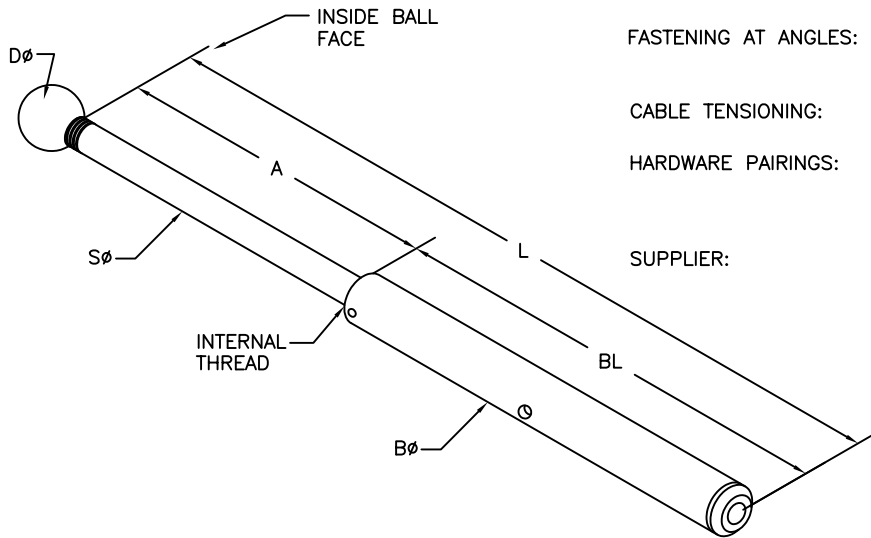
FASTENING TO POST: ATTACH THROUGH END/TERMINATION POST HOLES USING A SCREW-ON BALL END.

FASTENING AT ANGLES: DRILL SLOTS OR ANGLED POST HOLES AND TURNBUCKLE WILL PIVOT ON BALL END.

CABLE TENSIONING: ADJUST BY TURNING TUBULAR TURNBUCKLE BODY.

HARDWARE PAIRINGS: USUALLY PAIRED WITH FIXED BALL END OR ANOTHER SLEEKLINE BALL END TURNBUCKLE. MAY ALSO USE ANY OTHER TENSION ADJUSTMENT FITTING OR FIXED END.

SUPPLIER: FEENEY ARCHITECTURAL PRODUCTS



SLEEKLINE BALL END TURNBUCKLE, STAINLESS STEEL

PART#	SWAGE TYPE	CABLE SIZE	BALL END DIA (Dø)	SHAFT LENGTH CLOSED (OPEN) (A)	SHAFT DIA (Sø)	BODY LENGTH (BL)	BODY DIA (Bø)	LENGTH CLOSED (OPEN) (L)	*ATTACHMENT POST DRILL HOLE ø
3345	MACHINE	1/8"	5/8"	3-3/8" (5")	1/4"	4-3/4"	1/2"	8-1/8" (9-3/4")	5/16"
3346	MACHINE	3/16"	5/8"	3-3/8" (5")	1/4"	4-3/4"	1/2"	8-1/8" (9-3/4")	5/16"
3350	CABLECRIMP	1/8"	5/8"	3-3/8" (5")	1/4"	4-3/4"	1/2"	8-1/8" (9-3/4")	5/16"
3351	CABLECRIMP	3/16"	5/8"	3-3/8" (5")	1/4"	4-3/4"	1/2"	8-1/8" (9-3/4")	5/16"

\* IF DESIRED THE BALL END CAN BE SLIGHTLY RECESSED INTO THE POST BY COUNTERBORING WITH A 9/16" DRILL

**feeneyarchitectural**  
PRODUCTS

CableRail™—Custom Assemblies  
2603 Union Street  
Oakland, CA 94607-2423  
Ph: 800-888-2418 or 510-893-9473  
Fx: 510-893-9484, www.cablerail.com