

ITEM: SLEEKLINE CAP END TURNBUCKLE

MATERIAL: TYPE 316 STAINLESS STEEL.

FITTING TYPE: ADJUSTABLE CABLE END TURNBUCKLE FOR ATTACHING & TENSIONING LINES. SMOOTH, ATTRACTIVE APPEARANCE WITHOUT ANY EXPOSED THREADS OR SWAGE ENDS.

SWAGE TYPE: CAN BE MACHINE SWAGED IN FACTORY BUT BEST SUITED FOR FIELD ATTACHMENT USING CABLECRIMP HAND SWAGE STYLE.

POST TYPE: METAL. WOOD POSSIBLE BUT NOT RECOMMENDED. (POSTS NOT INCLUDED).

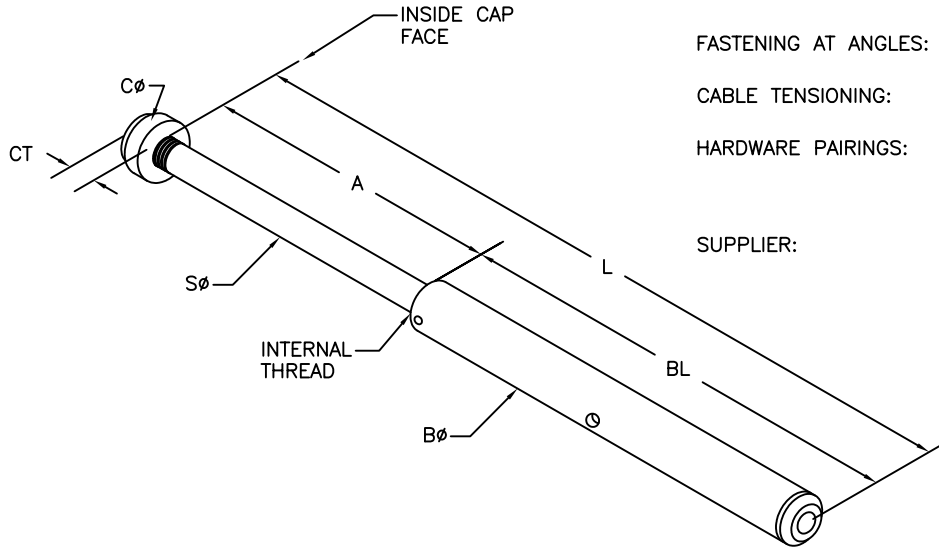
FASTENING TO POST: ATTACH THROUGH END/TERMINATION POST HOLES USING A SMALL END CAP.

FASTENING AT ANGLES: DRILL POST HOLES AT ANGLE AND USE BEVELED WASHERS

CABLE TENSIONING: ADJUST BY TURNING TUBULAR TURNBUCKLE BODY.

HARDWARE PAIRINGS: USUALLY PAIRED WITH FIXED CAP END OR ANOTHER SLEEKLINE CAP END TURNBUCKLE. MAY ALSO USE ANY OTHER TENSION ADJUSTMENT FITTING OR FIXED END.

SUPPLIER: FEENEY ARCHITECTURAL PRODUCTS



SLEEKLINE CAP END TURNBUCKLE, STAINLESS STEEL

PART#	SWAGE TYPE	CABLE SIZE	END CAR DIA (CØ)	END CAP THICK (CT)	SHAFT LENGTH CLOSED (OPEN) (A)	SHAFT DIA (SØ)	BODY LENGTH (BL)	BODY DIA (BØ)	LENGTH CLOSED (OPEN) (L)	ATTACHMENT POST DRILL HOLE Ø
3300	MACHINE	1/8"	9/16"	5/16"	3-1/2" (5-1/8")	1/4"	4-3/4"	1/2"	8-1/4" (9-7/8")	5/16"
3302	MACHINE	3/16"	9/16"	5/16"	3-1/2" (5-1/8")	1/4"	4-3/4"	1/2"	8-1/4" (9-7/8")	5/16"
3305	CABLECRIMP	1/8"	9/16"	5/16"	3-1/2" (5-1/8")	1/4"	4-3/4"	1/2"	8-1/4" (9-7/8")	5/16"
3282	CABLECRIMP	3/16"	9/16"	5/16"	3-1/2" (5-1/8")	1/4"	4-3/4"	1/2"	8-1/4" (9-7/8")	5/16"

feeneyarchitectural
PRODUCTS

CableRail™—Custom Assemblies
2603 Union Street
Oakland, CA 94607-2423
Ph: 800-888-2418 or 510-893-9473
Fx: 510-893-9484, www.cablerail.com