

SLEEKLINE JAW TURNBUCKLE

DWG # 187-SJTB ISO REV 2
DATE 11/07

ITEM: SLEEKLINE JAW TURNBUCKLE

MATERIAL: TYPE 316 STAINLESS STEEL.

FITTING TYPE: ADJUSTABLE CABLE END TURNBUCKLE FOR ATTACHING & TENSIONING LINES. SMOOTH, ATTRACTIVE APPEARANCE WITHOUT ANY EXPOSED THREADS OR SWAGE ENDS.

SWAGE TYPE: CAN BE MACHINE SWAGED IN FACTORY BUT BEST SUITED FOR FIELD ATTACHMENT USING CABLECRIMP HAND SWAGE STYLE.

POST TYPE: METAL OR WOOD. (POSTS NOT INCLUDED).

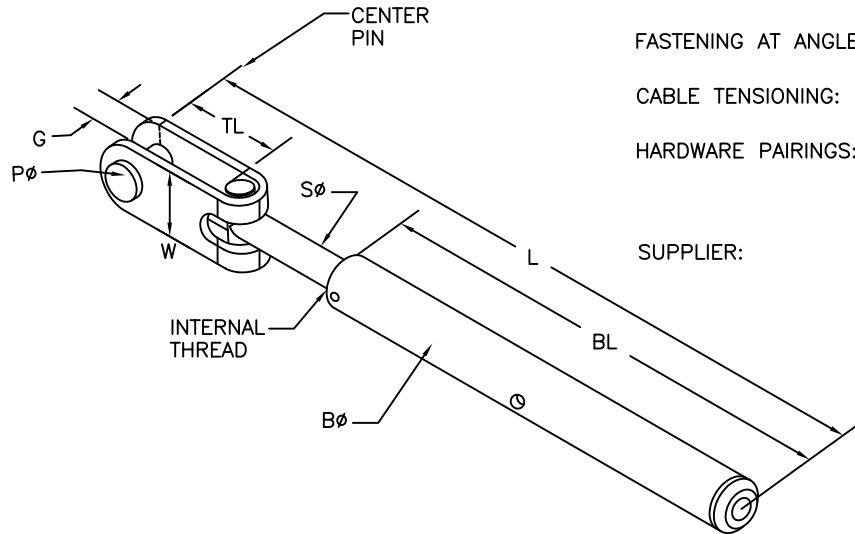
FASTENING TO POST: ATTACH TO EYE BOLTS, LAG EYES, EYELETS OR WELDED TAB EYES ON END/TERMINATION POST OR WALL USING REMOVABLE CLEVIS PIN.

FASTENING AT ANGLES: TURNBUCKLE PIVOTS UP TO 180 DEGREES AT CLEVIS PIN.

CABLE TENSIONING: ADJUST BY TURNING TUBULAR TURNBUCKLE BODY.

HARDWARE PAIRINGS: USUALLY PAIRED WITH FIXED JAW END OR ANOTHER SLEEKLINE JAW END TURNBUCKLE. MAY ALSO USE ANY OTHER TENSION ADJUSTMENT FITTING OR FIXED END.

SUPPLIER: FEENEY ARCHITECTURAL PRODUCTS



SLEEKLINE JAW TURNBUCKLE, STAINLESS STEEL

PART#	SWAGE TYPE	CABLE SIZE	PIN DIA. (Pø)	THROAT (TL)	GRIP (G)	FLANGE WIDTH (W)	SHAFT DIA (Sø)	BODY LENGTH (BL)	BODY DIA (Bø)	LENGTH CLOSED (OPEN) (L)	ATTACHMENT POST PIN DRILL HOLE ø
3295	MACHINE	1/8"	1/4"	15/16"	5/16"	5/8"	1/4"	4-3/4"	1/2"	6-3/8" (8")	5/16"
3296	MACHINE	3/16"	1/4"	15/16"	5/16"	5/8"	1/4"	4-3/4"	1/2"	6-3/8" (8")	5/16"
3297	CABLECRIMP	1/8"	1/4"	15/16"	5/16"	5/8"	1/4"	4-3/4"	1/2"	6-3/8" (8")	5/16"
3299	CABLECRIMP	3/16"	1/4"	15/16"	5/16"	5/8"	1/4"	4-3/4"	1/2"	6-3/8" (8")	5/16"

feeneyarchitectural
PRODUCTS

CableRail™-Custom Assemblies
2603 Union Street
Oakland, CA 94607-2423
Ph: 800-888-2418 or 510-893-9473
Fx: 510-893-9484, www.cablerail.com